



## Betty L. Fawley

May 23, 1929 - June 22, 2013

Betty L. Fawley, 84, of Miller's Merry Manor, Warsaw, formerly of Mentone, passed away at 7:05 a.m. Saturday, June 22, 2013, in her residence.

She was born May 23, 1929, in Rochester, to John and Hazel (Clay) Waltz.

Betty married Jack D. Fawley on May 15, 1954, in Rochester. He preceded her in death on March 21, 2001.

She was a graduate of Richland Center High School in 1947. She was a member of the Mentone United Methodist Church. Betty enjoyed crocheting and sewing for her family. She also loved to spend time with her grandchildren, and made all of them an afghan. For many years, she enjoyed attending the Nutrition Site in Mentone.

She worked in the cafeteria of Mentone School for 24 years.

Survivors include two daughters, Cindy and husband Mike Whetstone, Mentone, and Carol and husband Wayne Hintz, Francesville; one son, J. Steven and wife Carla Fawley, Syracuse; 11 grandchildren, Jared, Malissa, Crystal, and Carlana, Nick, Blake, Cameron, Scott, Carrie, Jenny and Lisa; 14 great-grandchildren; three sisters, Marjorie Gibbons, Rochester; Irene Montague, Fort Myers, Fla., and Patsy Waltz, Indianapolis; and two brothers,

Richard and wife Karen Waltz, Rochester, and Byron and wife Sue Waltz, Rochester.

She was preceded in death by an infant brother, and one sister, Esther Jean Hawk.

Funeral service is at 11 a.m. Wednesday, June 26, 2013, at King Memorial Home, Mentone, with Rev. Amber Karkosky-Litten officiating.

Visitation is one hour prior to the service Wednesday at the funeral home.

Burial will be in Mentone Cemetery, Mentone.

Memorial contributions may be made to Mentone Nutrition Site.

# Cemetery Details

## Mentone Cemetery

Morgan St Jefferson Street  
Mentone, IN 46539

# Previous Events

## Visitation

**JUN 26.** 10:00 AM - 11:00 AM (ET)

King Memorial Home  
101 North Tucker Street  
P.O. Box 56  
Mentone, IN 46539  
(574) 353-7975  
info@hartzlerfuneralservices.com  
<https://www.hartzlerfuneralservices.com>

## Funeral Service

**JUN 26.** 11:00 AM (ET)

King Memorial Home  
101 North Tucker Street  
P.O. Box 56  
Mentone, IN 46539  
(574) 353-7975  
info@hartzlerfuneralservices.com  
<https://www.hartzlerfuneralservices.com>

# Tribute Wall



“ Hartzler Funeral Services created a Tribute Video in memory of Betty L. Fawley

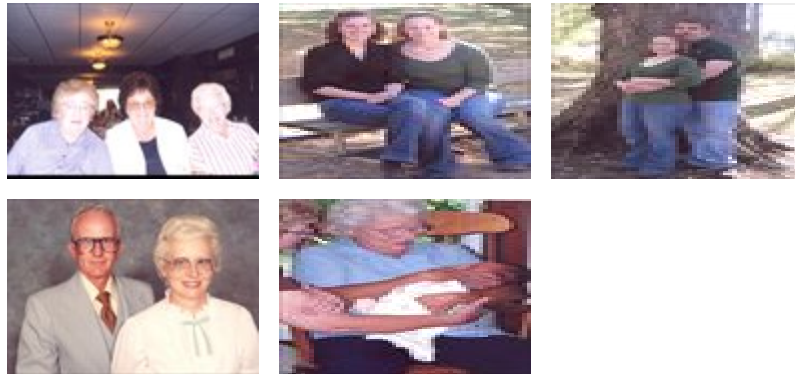


---

Hartzler Funeral Services - June 22, 2013 at 12:00 AM



“ 17 files added to the album Memories Album



---

Hartzler Funeral Services - June 25, 2013 at 12:02 PM



“ 90 files added to the album Memories Album



---

**Hartzler Funeral Services** - June 24, 2013 at 10:12 AM